



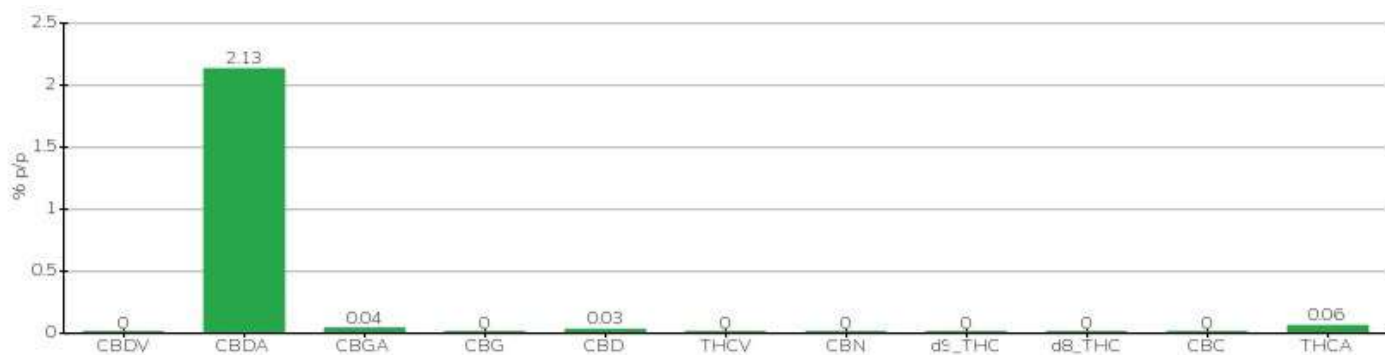
## TECHNICAL REPORT

<b>Committente</b>	Custom	<b>Etichetta</b>	123876000987
<b>Data accettazione</b>	15/01/2026	<b>Tipologia campione</b>	infiorescenza
<b>Data analisi</b>	16/01/2026	<b>varietà</b>	Muka 76
<b>Codice riferimento interno</b>	BUBBLE GUM	<b>N. Cartellino</b>	B33716202100001
<b>Metodica analitica</b>	HPLC - HS - Rev.2	<b>Campionamento</b>	a cura del cliente
<b>Lotto</b>			

### Note

Parametro	% p/p	Metodo
CBDV	<0.01%	HPLC-UV
CBDA	17.97%	HPLC-UV
CBGA	0.04%	HPLC-UV
CBG	<0.01%	HPLC-UV
CBD	0.30%	HPLC-UV
THCV	<0.01%	HPLC-UV
CBN	<0.01%	HPLC-UV
d9_THC	<0.01%	HPLC-UV
d8_THC	<0.01%	HPLC-UV
CBC	<0.01%	HPLC-UV
THCA	0.06%	HPLC-UV
<b>CBD TOTALE</b>	<b>16.06%</b>	<b>CALCOLATO</b>
<b>CBG TOTALE</b>	<b>0.03%</b>	<b>CALCOLATO</b>
<b>THC TOTALE</b>	<b>0.05%</b>	<b>CALCOLATO</b>

CAMPIONE ANALIZZATO: Muka 76(3.00gr)



Pineto

16/02/2023